

One machine for multiple uses

Dual-mode printing

2-inch thermal label printer

GP-2120TFN



2-in-1 label and receipt

Supports label and receipt dual printing mode
Can switch modes according to different scenarios

Auto detected First page roll back

Install the paper to quickly complete
the paper detection and positioning,
the first page roll back automatically.



Label/receipt
dual printing



Automatically roll
back the first page



External paper inlet



Front paper output



Chinese/English
selftest page



Wall plug integrated
power supply

GP-2120TFN 2-inch thermal label printer

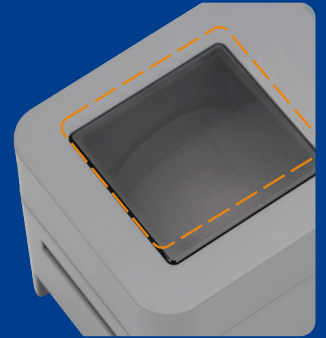
Wireless bluetooth connection

The bluetooth version supports both computer and mobile phone bluetooth connection printing.



Visual window design

Without opening the printer, you can view the printing paper usage and whether the paper output is smooth. The status is clear at a glance.



Back feed port

Back feed port supports larger roll consumables.
Easy to install and portable
No need to change paper frequently



Sliding paper holder

Adapt to different size labels
Meet the needs of different industries



Core parameters



Print mode
Thermal



Resolution
203DPI



Print speed
Receipt:120mm/s(max)
Label:127mm/s(max)



Paper output method
Front paper output



Interface
Standard:
USB+Cash Drawer
Optional:
USB+WiFi+Cash Drawer
USB+Bluetooth+Cash Drawer
USB+Ethernet+Serial
USB+Serial+Cash Drawer



Media width
20-62mm



Media type
Continuous, die-cut,
black mark, roll, fan-fold



Print width
Receipt:120mm/s(max)
Label:127mm/s(max)



Printer dimension
106mm×198mm×140mm
(DxWxH)



Thermal film (resistance)
30km



Power supply
DC 12V 1.5A



Environment parameters
Operation environment:
5~40°C, 20~90% non-condensing
Storage environment:
-25~55°C, 20%~93% non-condensing

Wide range of applications, can be used in all industries.

